



Green Screen Basics: Color Keying in Premiere

DIFFICULTY



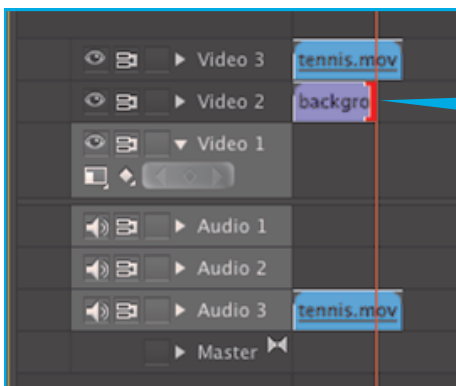
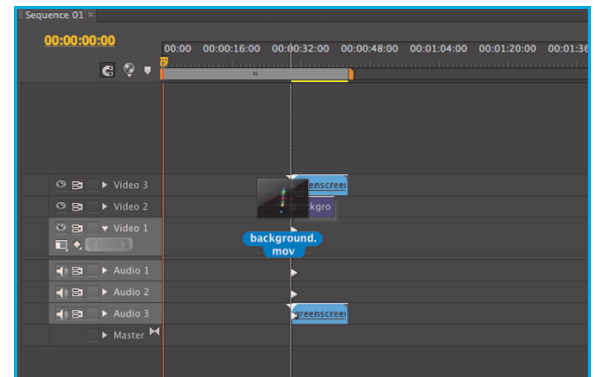
Step One: Lighten Up!

1. Use **lights to brighten** your green screen.
2. Make the **lighting as even as possible** so that the screen color is the same shade of green all over.

Step Two: Import & Edit

1. Import your footage and background clip into Premiere. Click **File-> Import** or **drag and drop** your files into the **Sequence**.

Tip: Make sure that your movie footage is in a track above your background footage. The higher track always plays in front of the lower track. For example, Video 2 will play over Video 1.

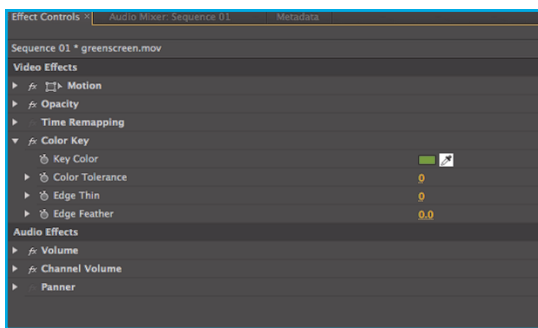
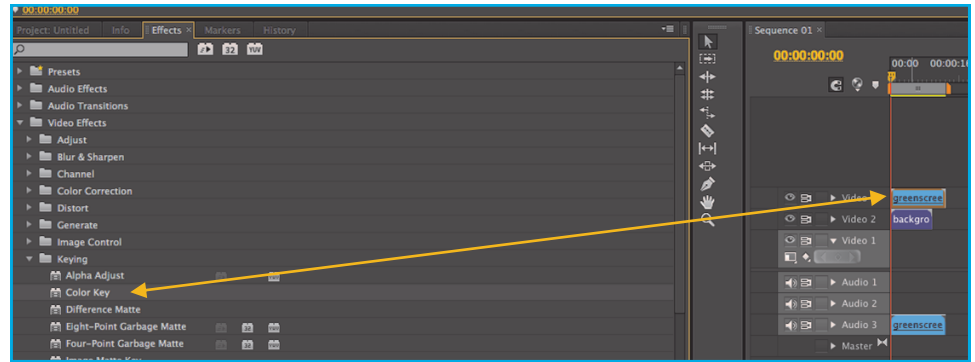


If needed, **drag** the end of your background clip so that the background track is the same duration as your video track.

Step Three: Color Keying

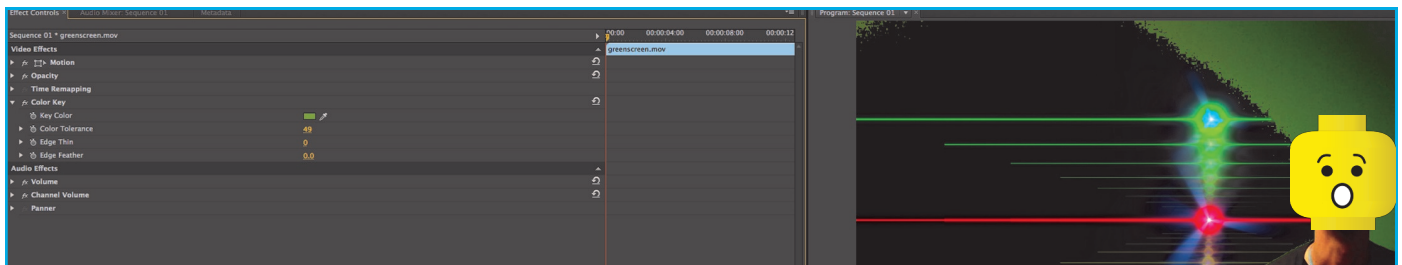
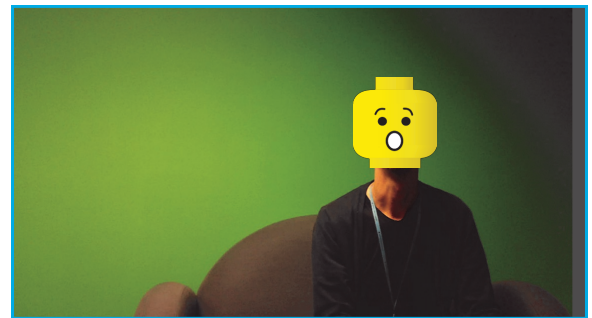
1. Replace your green screen with your background clip using the **Color Key** effect. Click **Video Effects -> Keying -> Color Key**.

2. Then **drag and drop Color Key** onto your video footage track.



4. Click on the **dropper** in **Effect Controls**.

5. Then click on the green in your video footage.



6. Then **drag and drop Color Key** onto your video footage track.

7. Use **Edge Thin** and **Edge Feather** to clean up any imperfections.

Tip: You may need to **Color Key** multiple times if your green is uneven or if you have shadows in your footage.

YOU'RE DONE! HERE ARE SOME MORE GREEN SCREEN PROJECTS:

Download more backgrounds here: <http://cmssix.com/free-green-screen-videos/>

Interactive backgrounds: plan out your action and pick a background you can interact with.