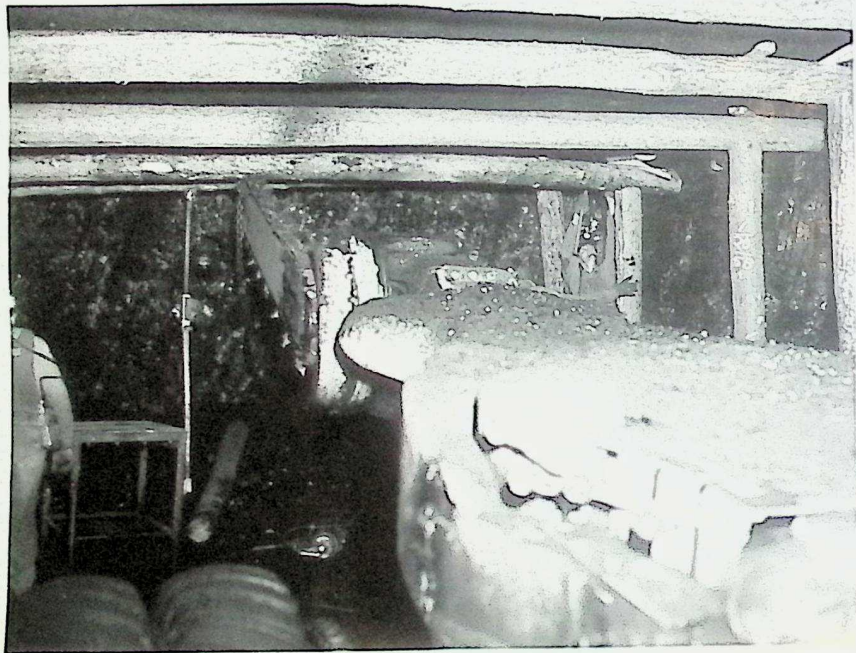
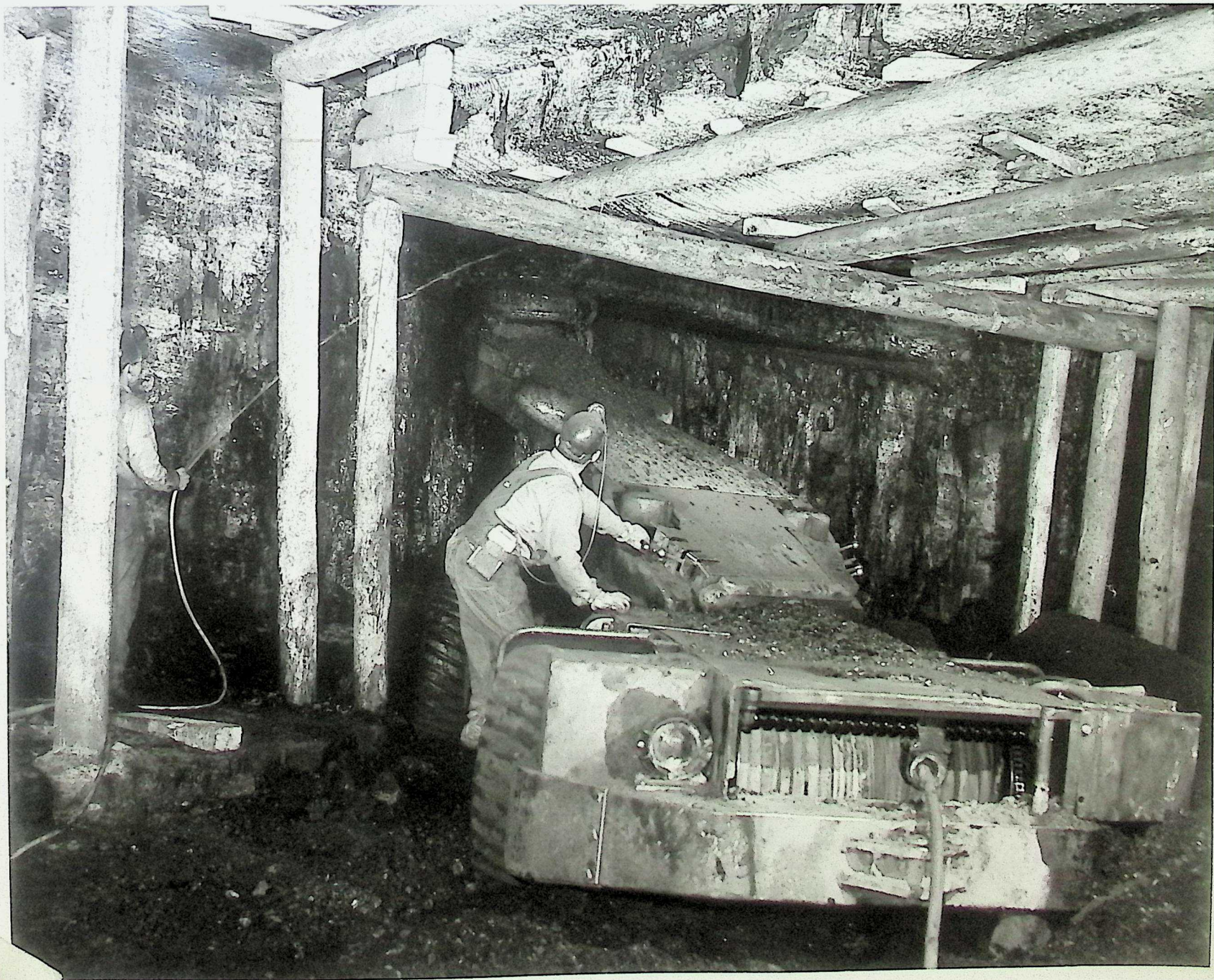


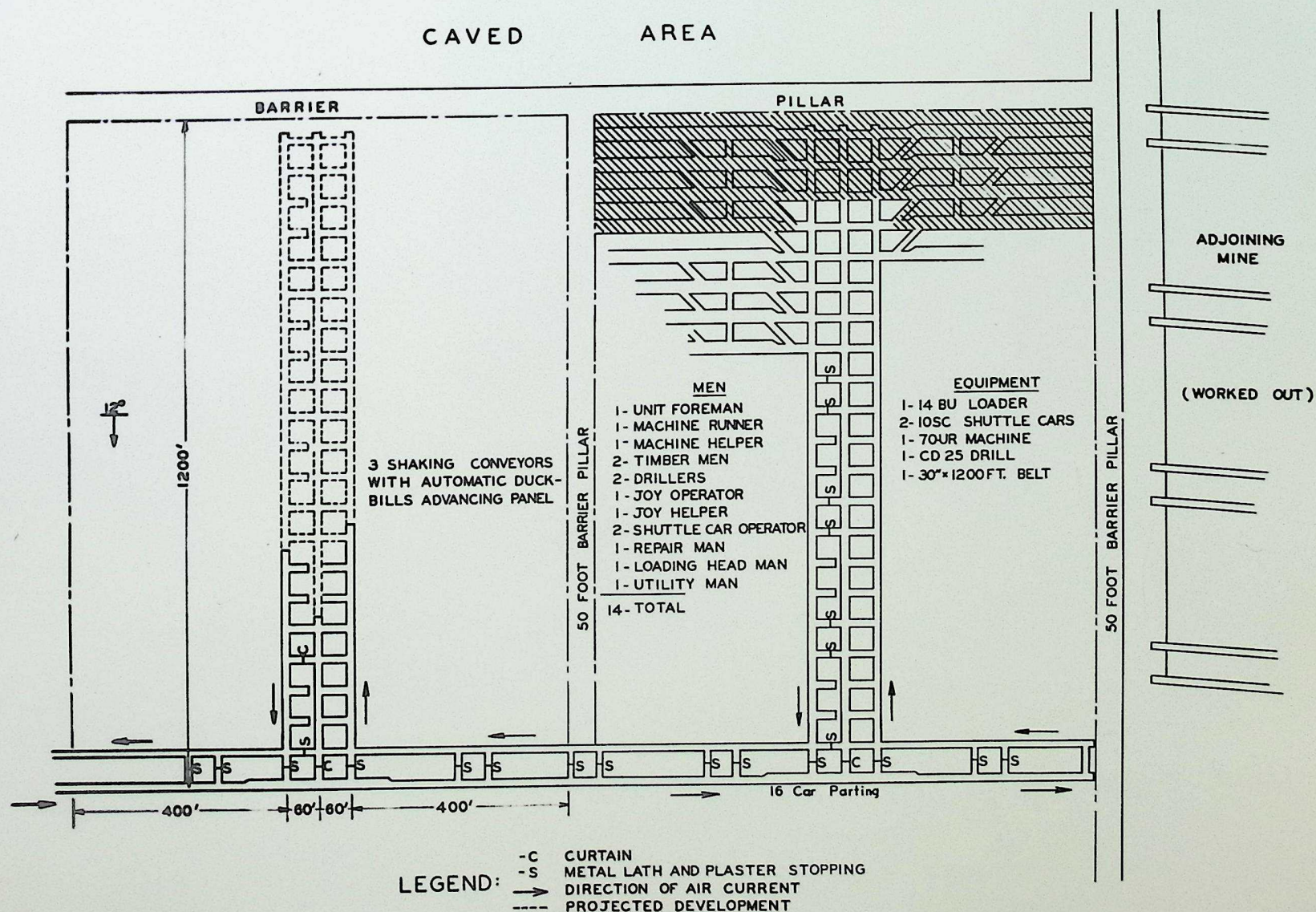
Stansbury

Panel System of Mowing



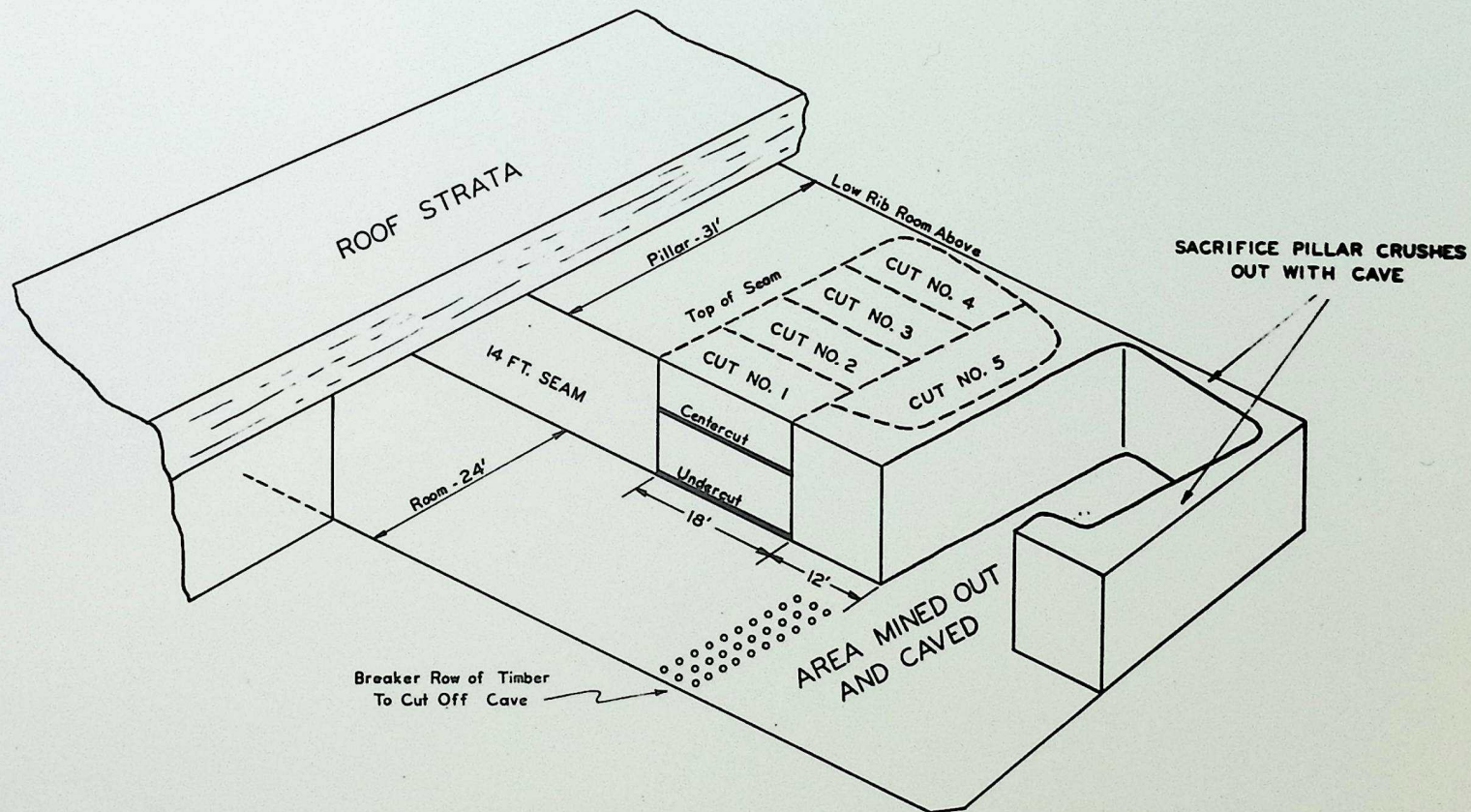


Extras Page



PANEL SYSTEM OF MINING - STANSBURY, WYOMING

Fig. 1



METHOD OF PILLAR RECOVERY - STRIKE ROOM

Fig. 2



Fig. 3

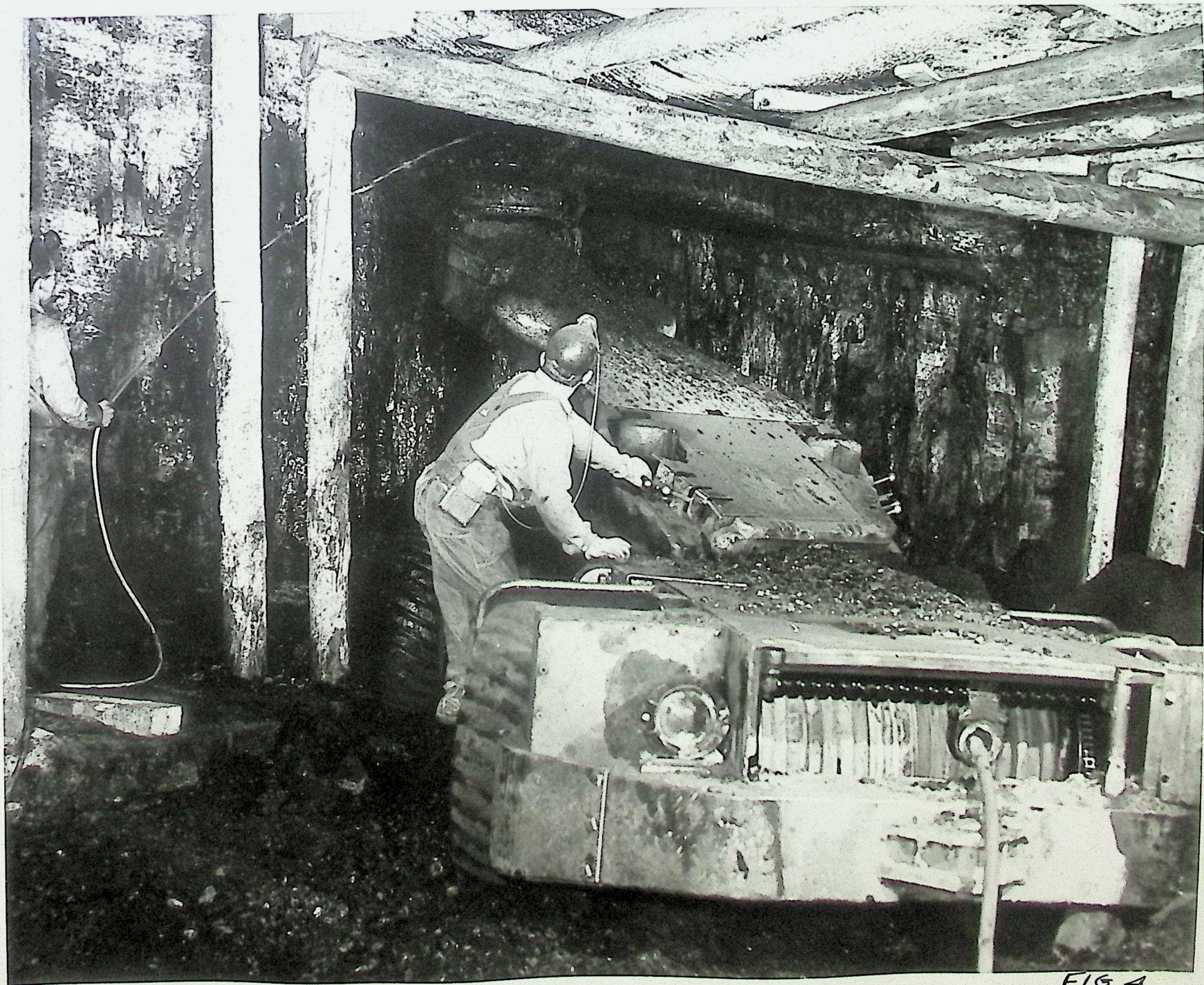
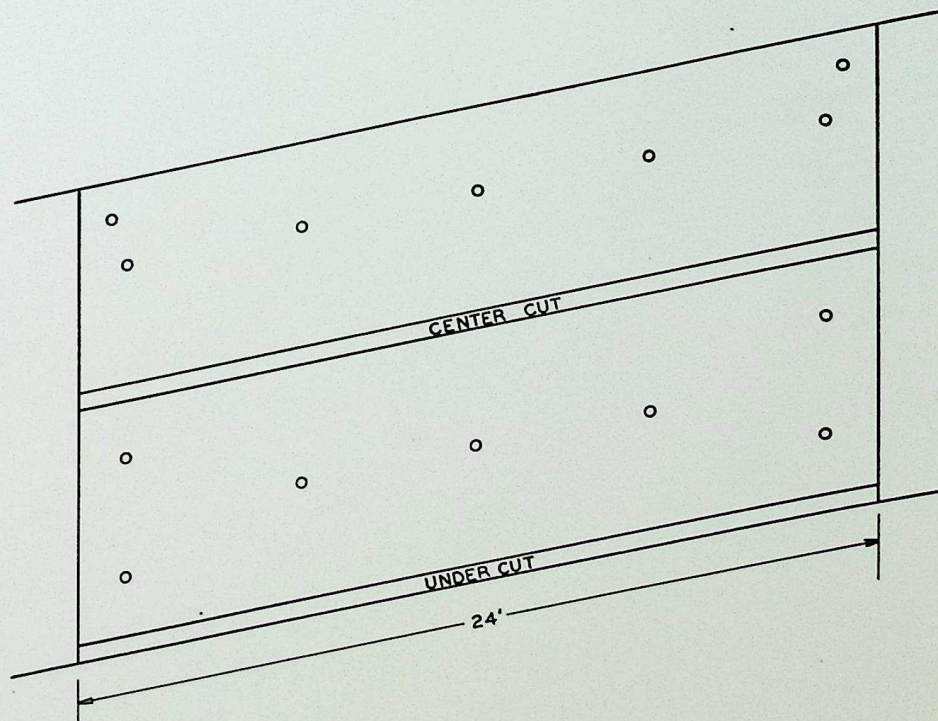
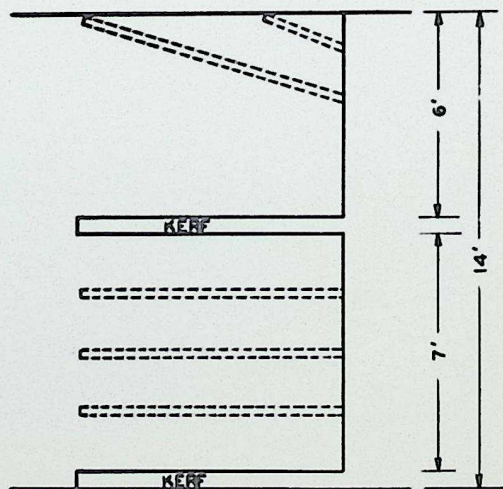


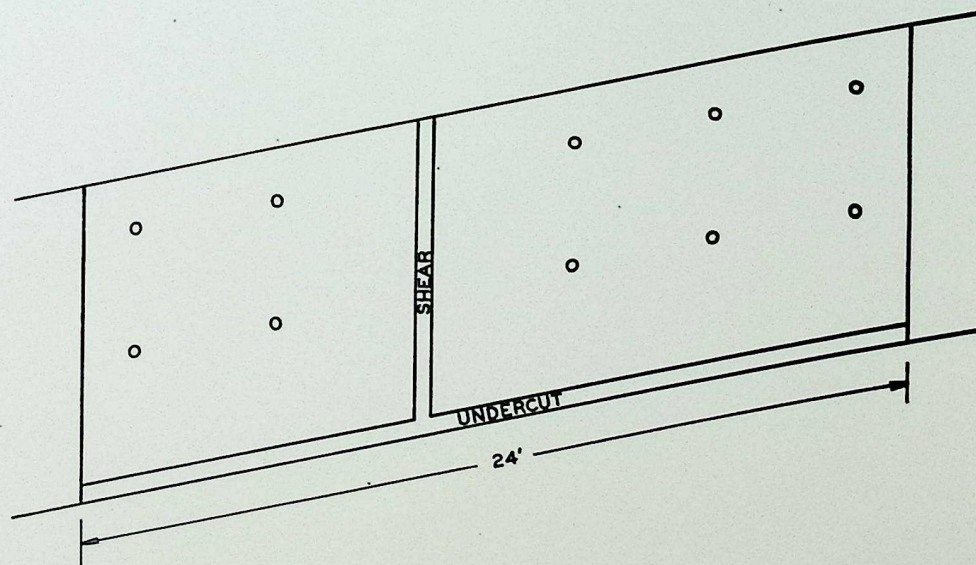
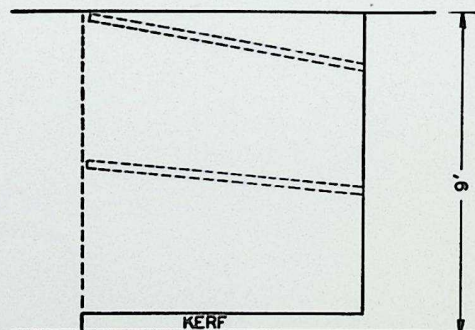
FIG. 4



POWDER USED: 14.4-16.5 LBS.
 COAL RECOVERED: 115 TONS (APPROXIMATE)
 COAL PER LB. POWDER: 7-8 TONS

TYPICAL METHOD OF CUTTING AND DRILLING
 A FOURTEEN FOOT SECTION

Fig. 5



POWDER USED: 9.5-11.0 LBS.
 COAL RECOVERED: 75 TONS (APPROXIMATE)
 COAL PER LB. POWDER: 6.8-7.9 TONS

TYPICAL METHOD OF CUTTING AND DRILLING
 A NINE FOOT SECTION

Fig. 6